

# Immigration

---

## Data and Policy Update, July 2020

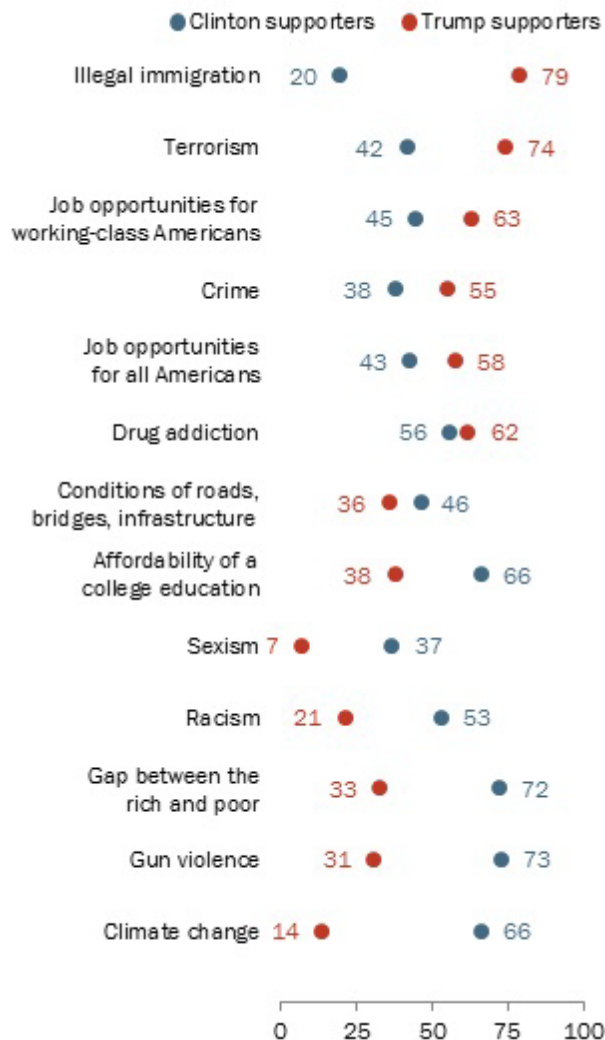
### **Denzil Mohammed**

Director, Public Education Institute,  
The Immigrant Learning Center, Inc.,  
Malden, MA  
[dmohammed@ilctr.org](mailto:dmohammed@ilctr.org)

Immigrant Student Success online workshop, July 2020

## Clinton, Trump voters sharply diverged on seriousness of an array of problems

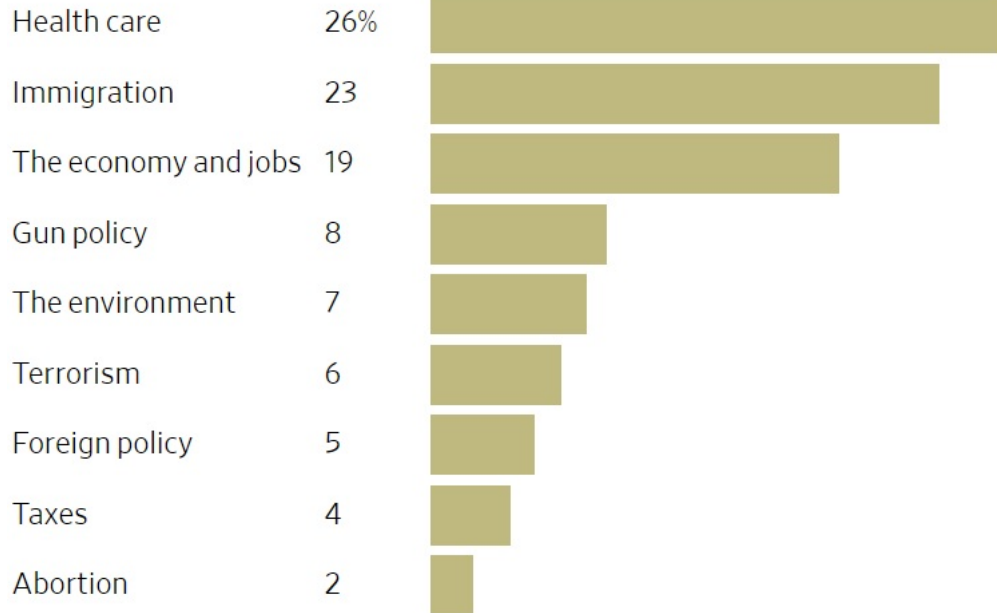
*% of voters who said each is a 'very big problem' in the country today ...*



Source: Pew Research Center, "A Divided and Pessimistic Electorate," 2016

# Public views on immigration

## Most Important Issue



Source: The Wall Street Journal, "How We Voted in the 2018 Midterms," 2018

# Public views on immigration

## Immigration policy - immigrants living in the U.S. illegally

	SHARE	VOTED DEMOCRAT	VOTED REPUBLICAN	VOTED OTHER
Offered a chance to apply for legal status	69%	66%	32%	3%
Deported to the country they came from	30	19	79	3

## Views of immigrants in the U.S.

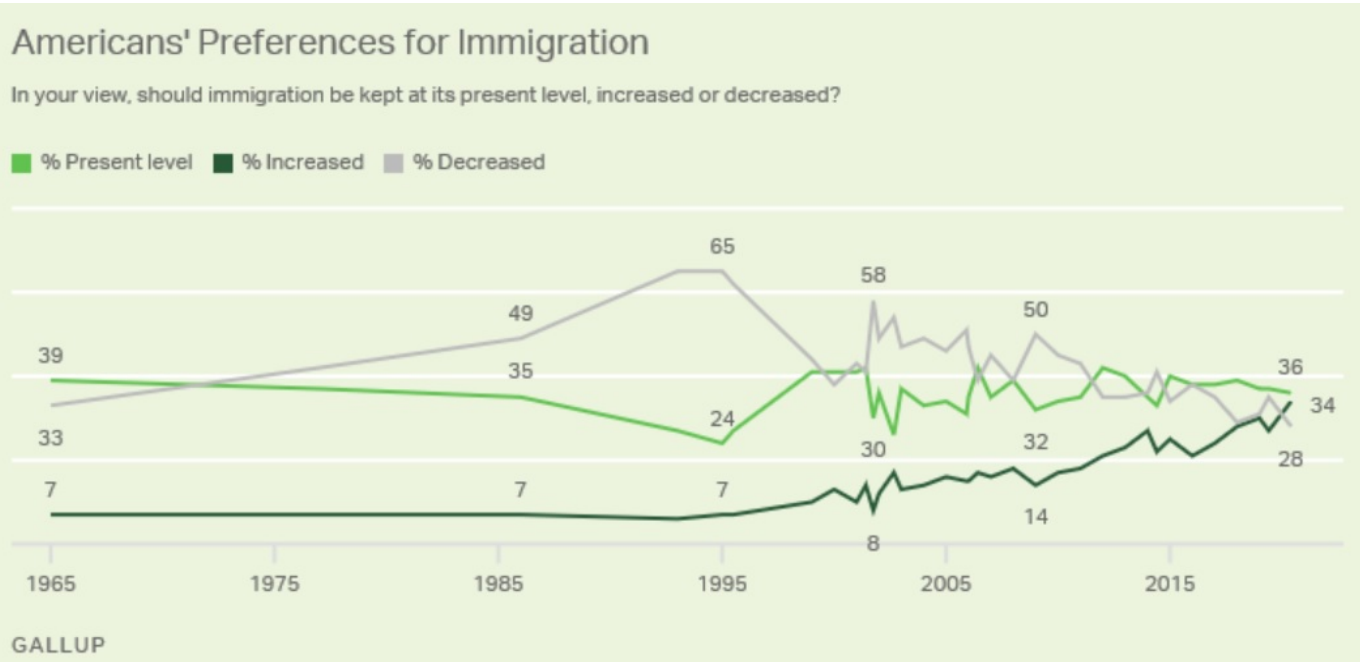
	SHARE	VOTED DEMOCRAT	VOTED REPUBLICAN	VOTED OTHER
Do more to help the country	59%	72%	26%	3%
Do more to hurt the country	39	20	77	3

## U.S.-Mexico border wall

	SHARE	VOTED DEMOCRAT	VOTED REPUBLICAN	VOTED OTHER
Strongly favor	31%	9%	90%	2%
Somewhat favor	17	25	71	4
Somewhat oppose	13	64	32	4
Strongly oppose	39	90	7	3

Source: The Wall Street Journal, "How We Voted in the 2018 Midterms," 2018

# Public views on immigration

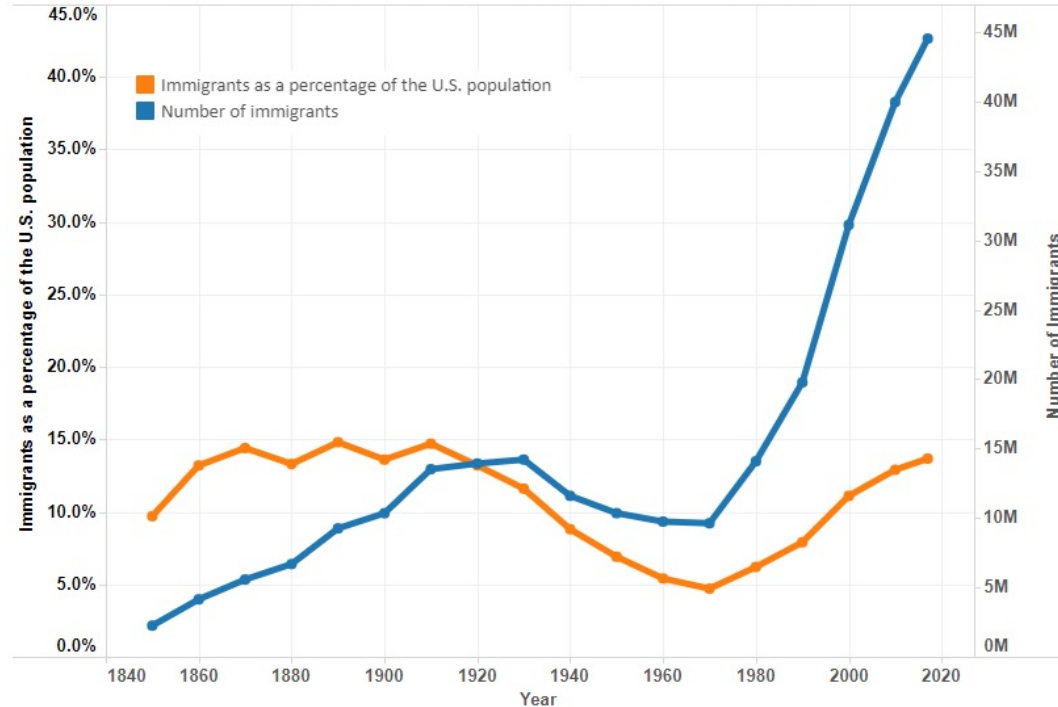


# Debunking immigration myths

---

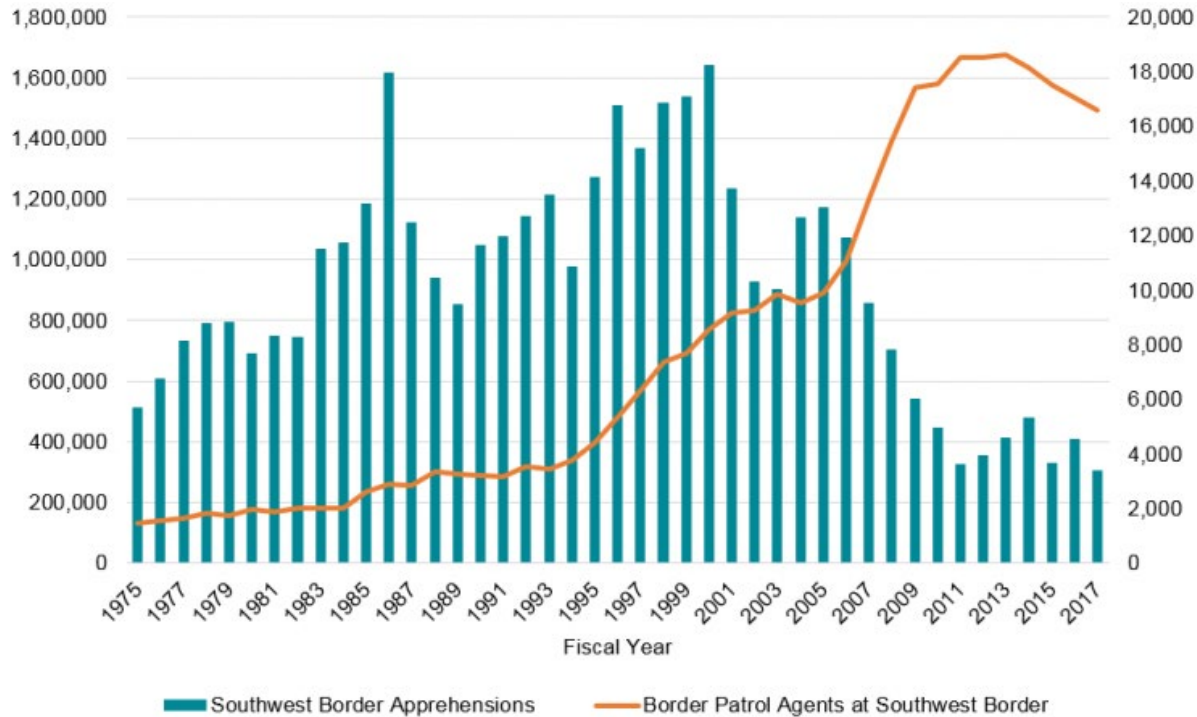
# Foreign-born population

Number of Immigrants and Their Share of the Total U.S. Population, 1850-2017



Source: Migration Policy Institute, U.S. Immigration Trends, 2020

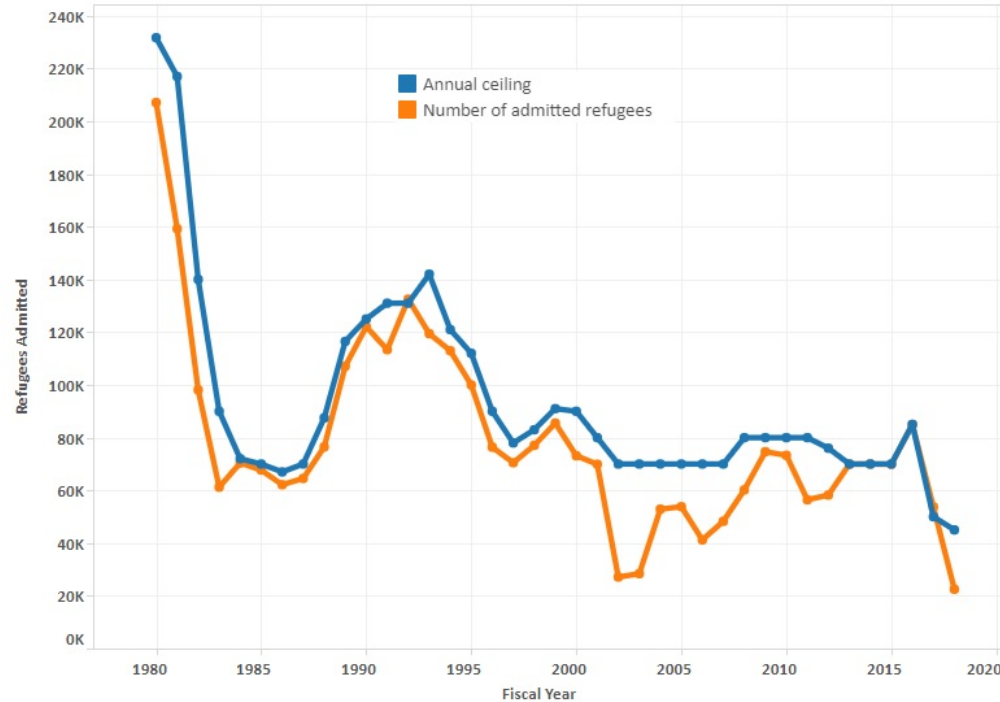
# Undocumented immigrant population





# Refugee admissions

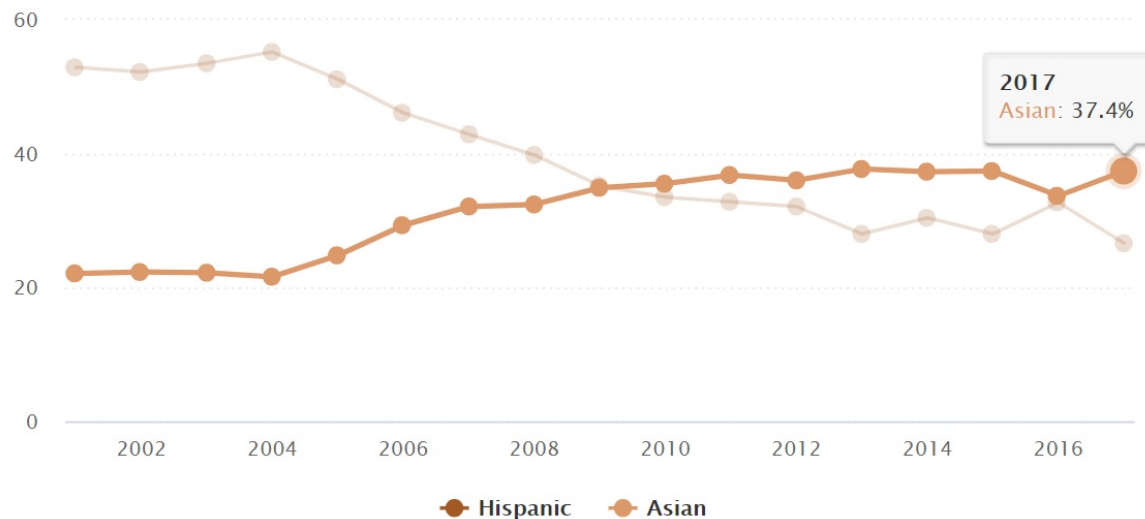
U.S. Refugee Admissions and Refugee Resettlement Ceilings, Fiscal Years 1980-2018



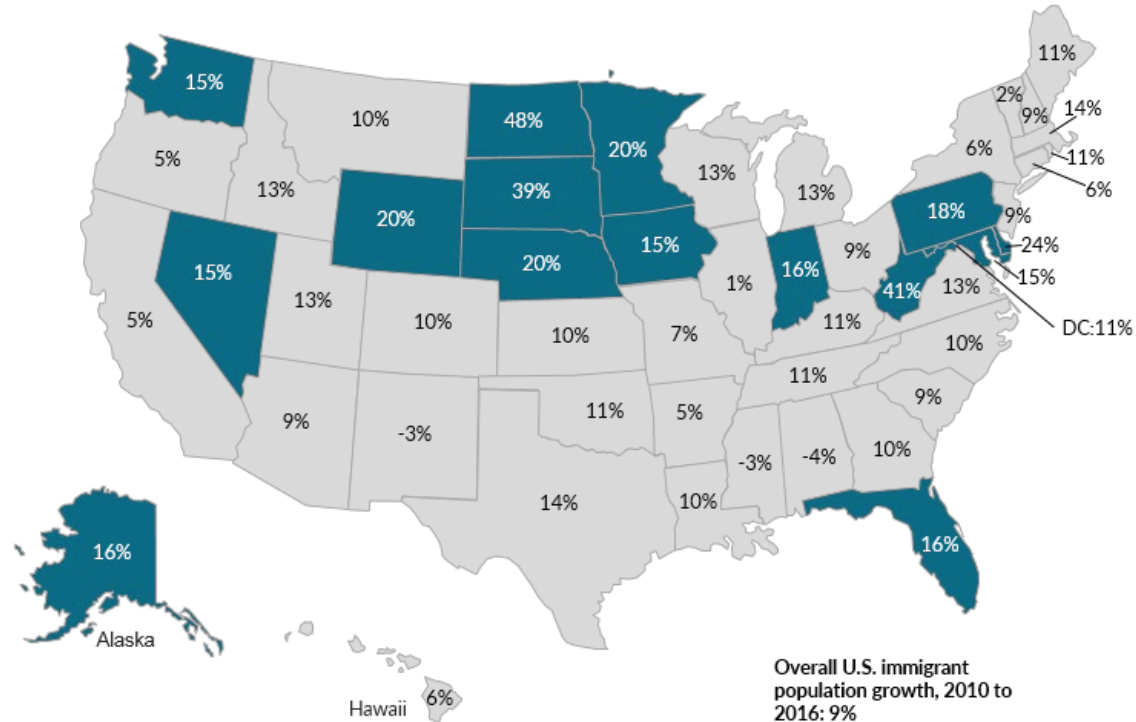
Source: Migration Policy Institute, U.S. Immigration Trends, 2020

# New arrivals: Asians surpass Hispanic immigrants

*% of immigrants arriving in the U.S. in each year who are ...*



# Fastest-growing states

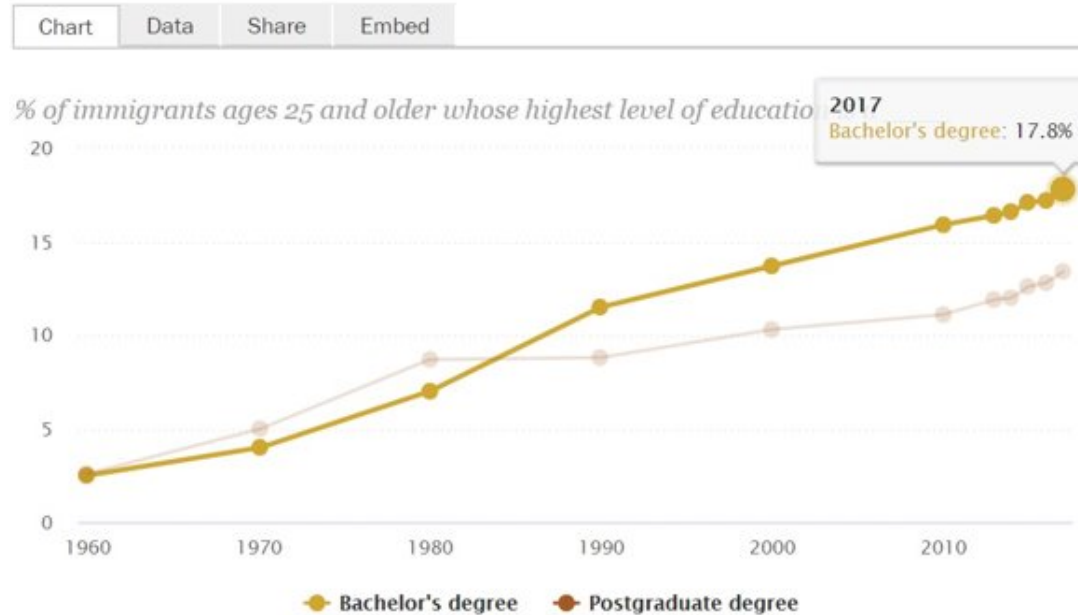


Overall U.S. immigrant  
population growth, 2010 to  
2016: 9%

Source: Migration Policy Institute, "Immigrants in the U.S. States with the Fastest-Growing Foreign-Born Populations," 2018

# Immigrants and education

## Educational attainment among U.S. immigrants, 1960-2017

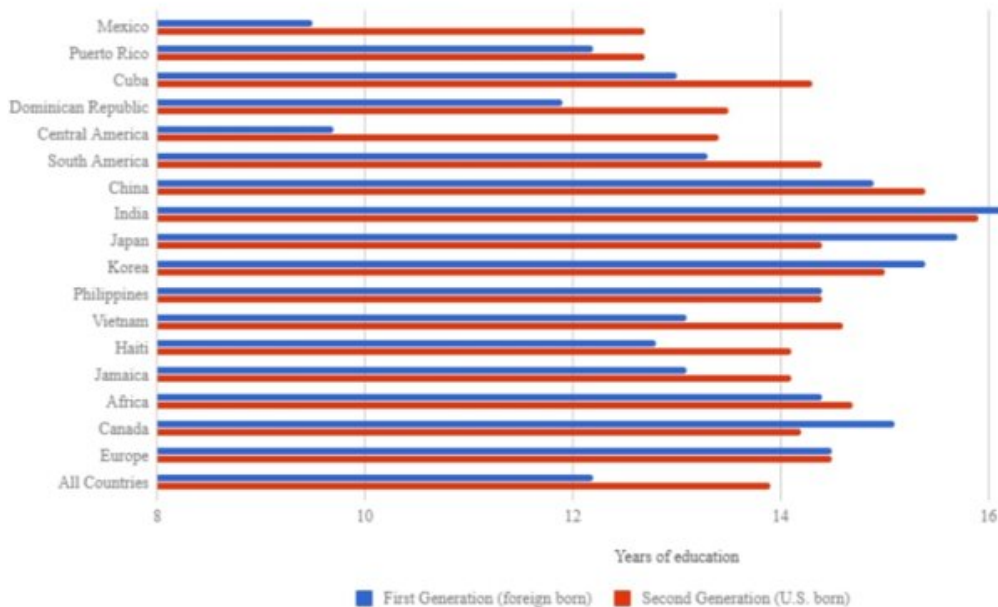


Source: Pew Research Center, "Facts on U.S. Immigrants, 2017," 2017

# Immigrants and education

Average education of first- and second-generation adult males, ages 25-59, by place of origin

Most surpass 13.8 years of average non-Hispanic U.S. white male

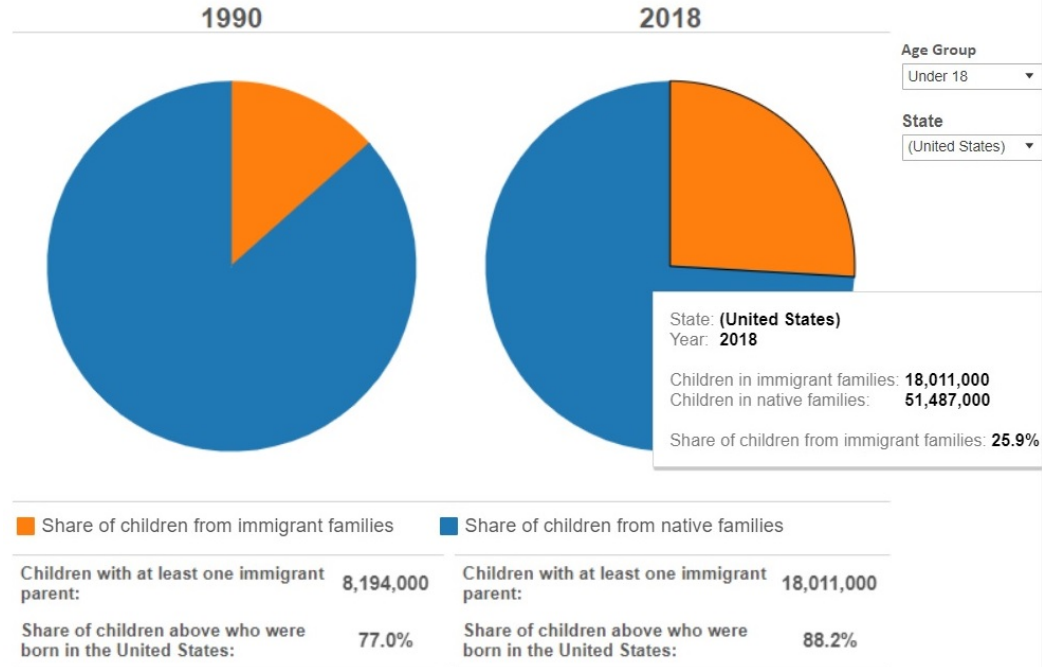


Source: Brian Duncan and Stephen J. Trejo, "Socioeconomic Integration of U.S. Immigrant Groups Over the Long Term" (working paper), 2018

# Immigrants and education

## Children in U.S. Immigrant Families:

Number and Share of the Total U.S. Child Population, by Age Group and State

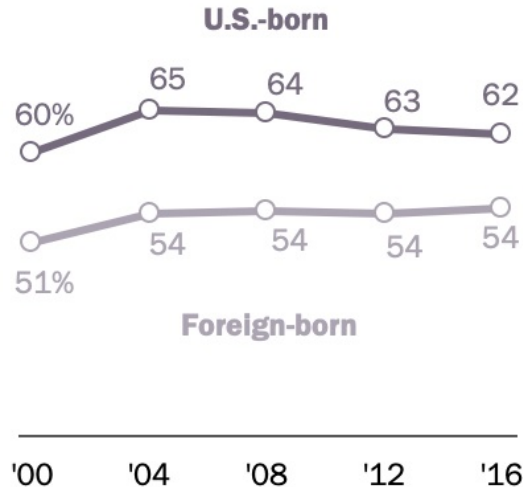


Source: Migration Policy Institute

# Foreign- vs. U.S.-born voting patterns

**U.S. born have long had  
higher voter turnout rates  
than immigrants**

*% of \_\_\_ eligible voters who say they  
voted*

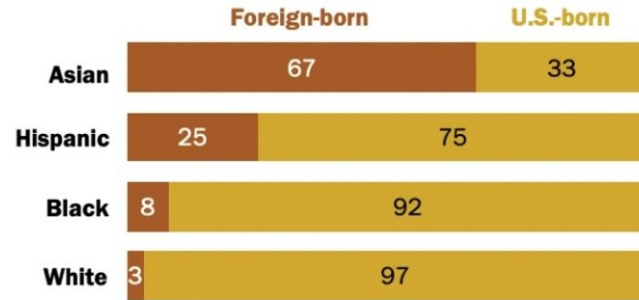


Source: Pew Research Center, "Naturalized Citizens Make Up Record One-in-Ten U.S. Eligible Voters in 2020," 2020

# Immigrant voter turnout

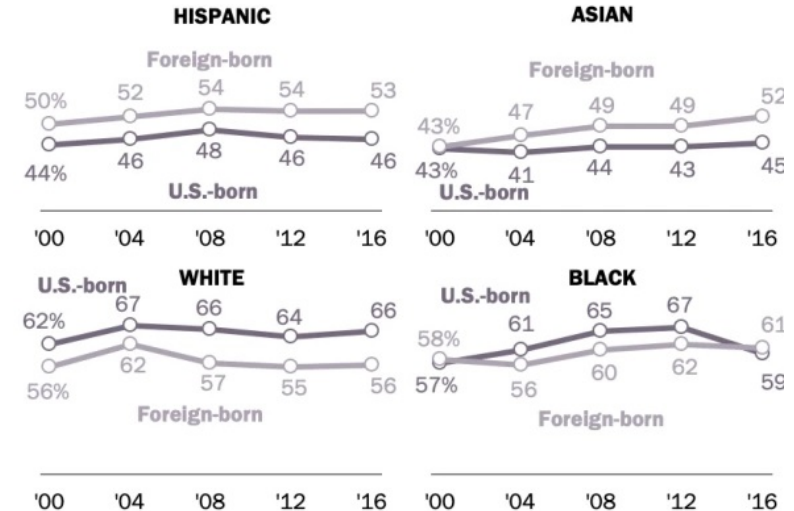
## Two-thirds of Asian eligible voters are immigrants

% of \_\_\_ eligible voters in 2018 who are ...



## Hispanic and Asian voter turnout rates higher among foreign born than U.S. born in presidential elections

% and nativity of \_\_\_ eligible voters who say they voted



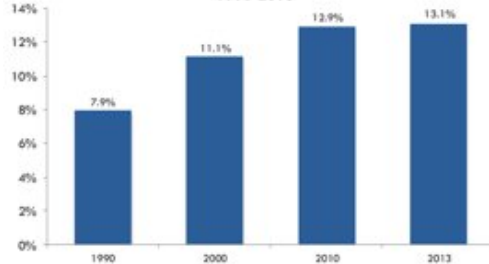
Source: Pew Research Center, "Naturalized Citizens Make Up Record One-in-Ten U.S. Eligible Voters in 2020," 2020





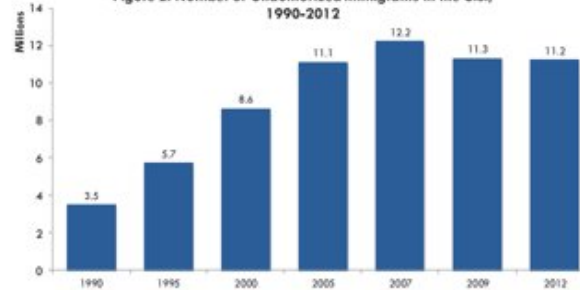
# Immigrants and crime

Figure 1: Foreign-Born Share of the U.S. Population, 1990-2013



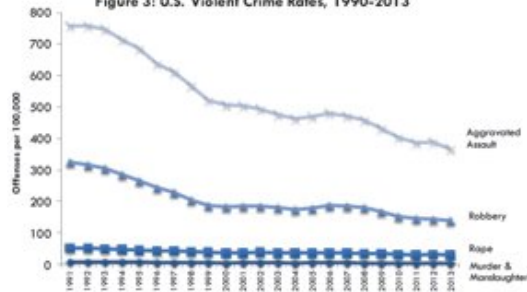
Source: Elizabeth M. Grieco, et al., *The Size, Place of Birth, and Geographic Distribution of the Foreign-Born Population in the United States: 1990 to 2010* (Washington, DC: U.S. Census Bureau, October 2012), p. 19; 2013 ACS 1-Year Estimates.

Figure 2: Number of Unauthorized Immigrants in the U.S., 1990-2012



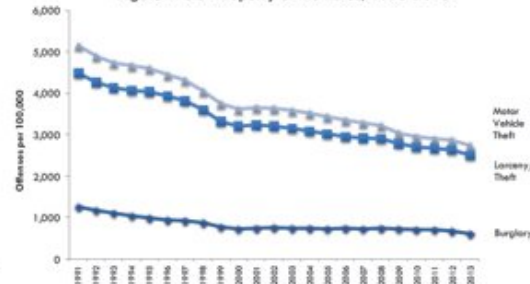
Source: Jeffrey S. Passel and D'Vera Cohn, *Unauthorized Immigrant Totals Rise in 7 States, Fall in 14* (Washington, DC: Pew Hispanic Center, November 18, 2014), Table A1.

Figure 3: U.S. Violent Crime Rates, 1990-2013



Source: FBI Uniform Crime Reports.

Figure 4: U.S. Property Crime Rates, 1990-2013



Source: FBI Uniform Crime Reports.

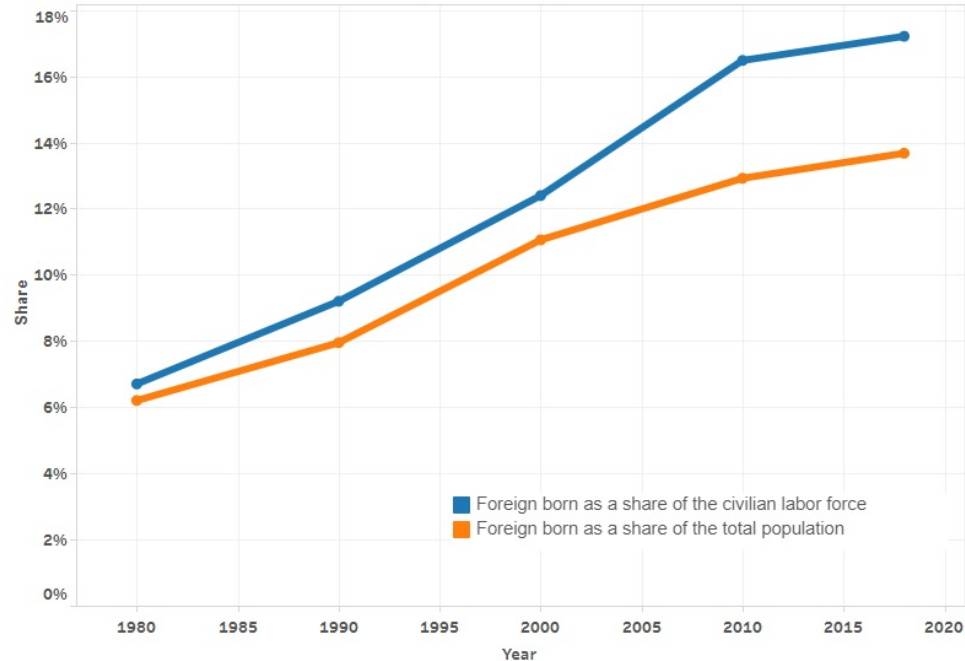
Source: American Immigration Council, *The Criminalization of Immigration in the United States*, 2015

# Are immigrants assets to the U.S.?

---

# Foreign-born share of labor force

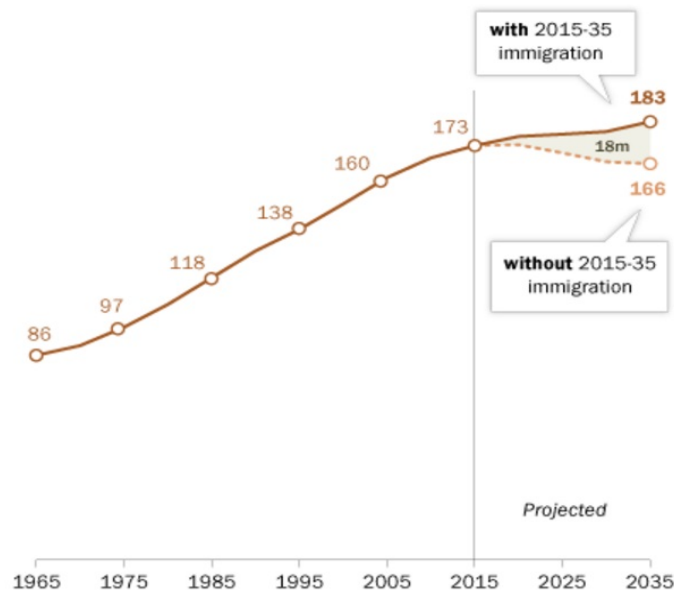
Immigrants in the Civilian Labor Force by U.S. State, 1980-2018



# Immigrants and the labor force

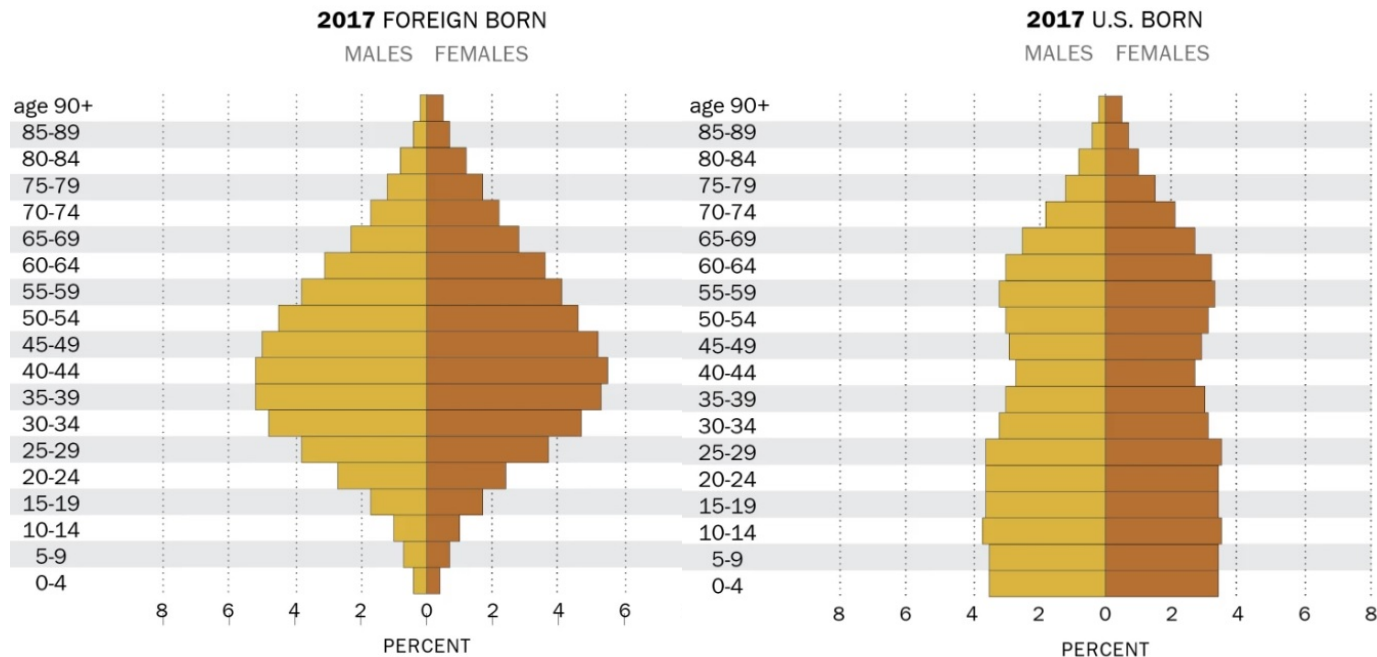
## Without future immigrants, working-age population in U.S. would decrease by 2035

*Working-age population (25-64), in millions*



Source: Pew Research Center, "Immigration projected to drive growth in U.S. working-age population through at least 2035," 2017

# Immigrants and the labor force



# Immigrant workers aiding recovery

## FARMING

Immigrants play a key role in growing and harvesting our food. While agricultural workers are undercounted in Census surveys, among those counted,

**35%** of crop production workers & **20%** of workers in the animal production industry  
*...are foreign born*



## FOOD PRODUCTION

*Immigrants are...*

**37%**

of meat processing industry workers



**34%**

of workers in commercial bakeries



**31%**

of fruit and vegetable preserving industry workers



**26%**

of workers in the seafood processing industry



# Immigrant workers aiding recovery

Immigrants represent **22%** of all workers in the U.S. food industry  
About 2.1 million of its nearly 10 million workers (excluding restaurants)

Immigrants, who accounted for 17% of all civilian employed workers in the United States in 2014-2018, represent far larger shares of many of the industries involved in growing, harvesting, processing, transporting, and selling food to American families

## From Field to Table: The Role of Immigrants



*Immigrants are...*

**30%**



of  
agriculture  
workers

**27%**



of workers  
in food  
production

**17%**



of  
transportation  
workers

**23%**



of grocery &  
farm product  
wholesalers

**17%**



of retail  
workers



# Immigrant workers aiding recovery

## GROCERY STORES



**483,000** immigrants work in grocery stores, representing **16%** of the nearly 3 million grocery retail workers

## KEY STATES

*Immigrants are...*



**69%**  
of  
California's  
agriculture  
workers



**70%**  
of Alaska's  
seafood  
processing  
workers

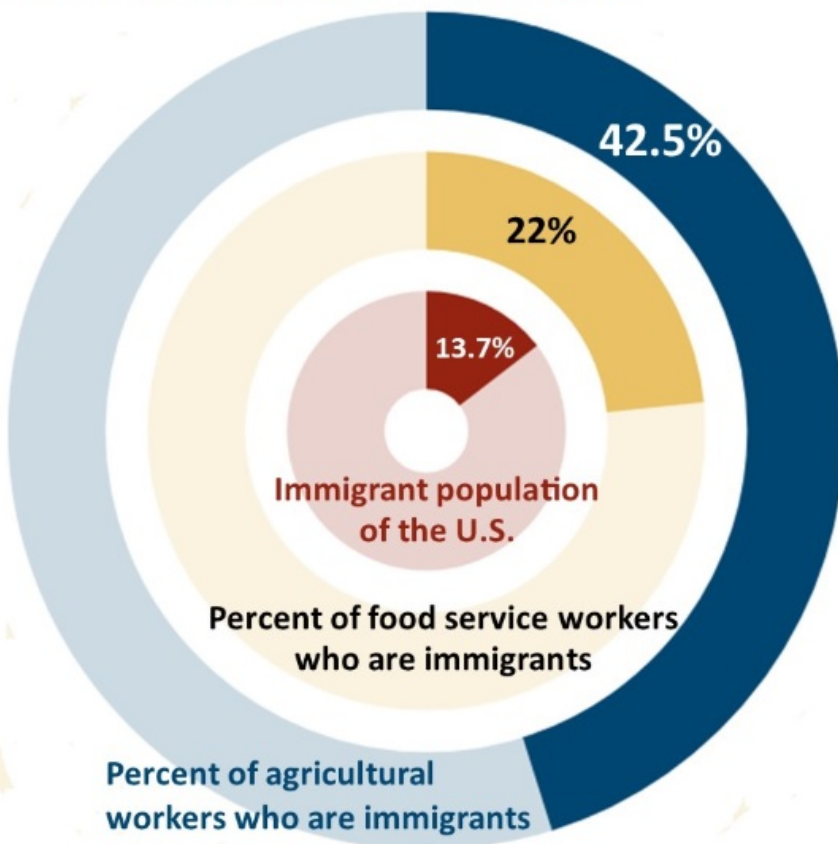


**66%** of  
Nebraska's  
meat  
processing  
workers





# Immigrants Feed America



The Immigrant  
Learning Center

Source: David J. Bier, CATO Institute, "Immigrants Aid America During COVID-19 Crisis," March 23, 2020.

Immigrants are **13.7%** of the U.S. population but:

**28%**

physicians/surgeons

**22%**

nursing, psychiatric  
and home health aides

**15%**

nurses

**40%**

medical scientists in  
manufacturing R&D

**50+%**

biotechnology  
workers



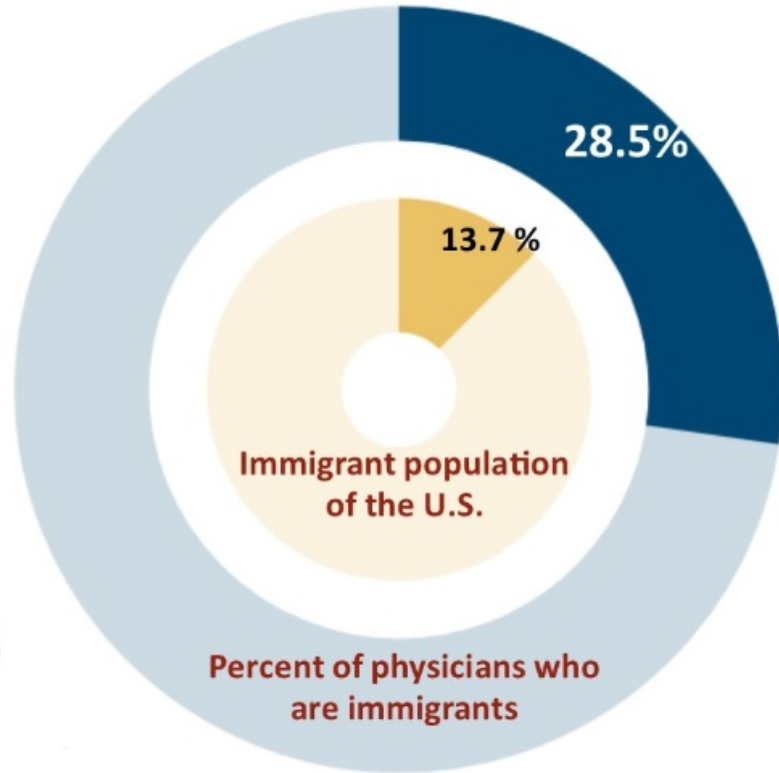
# Immigrants in health care by metro area

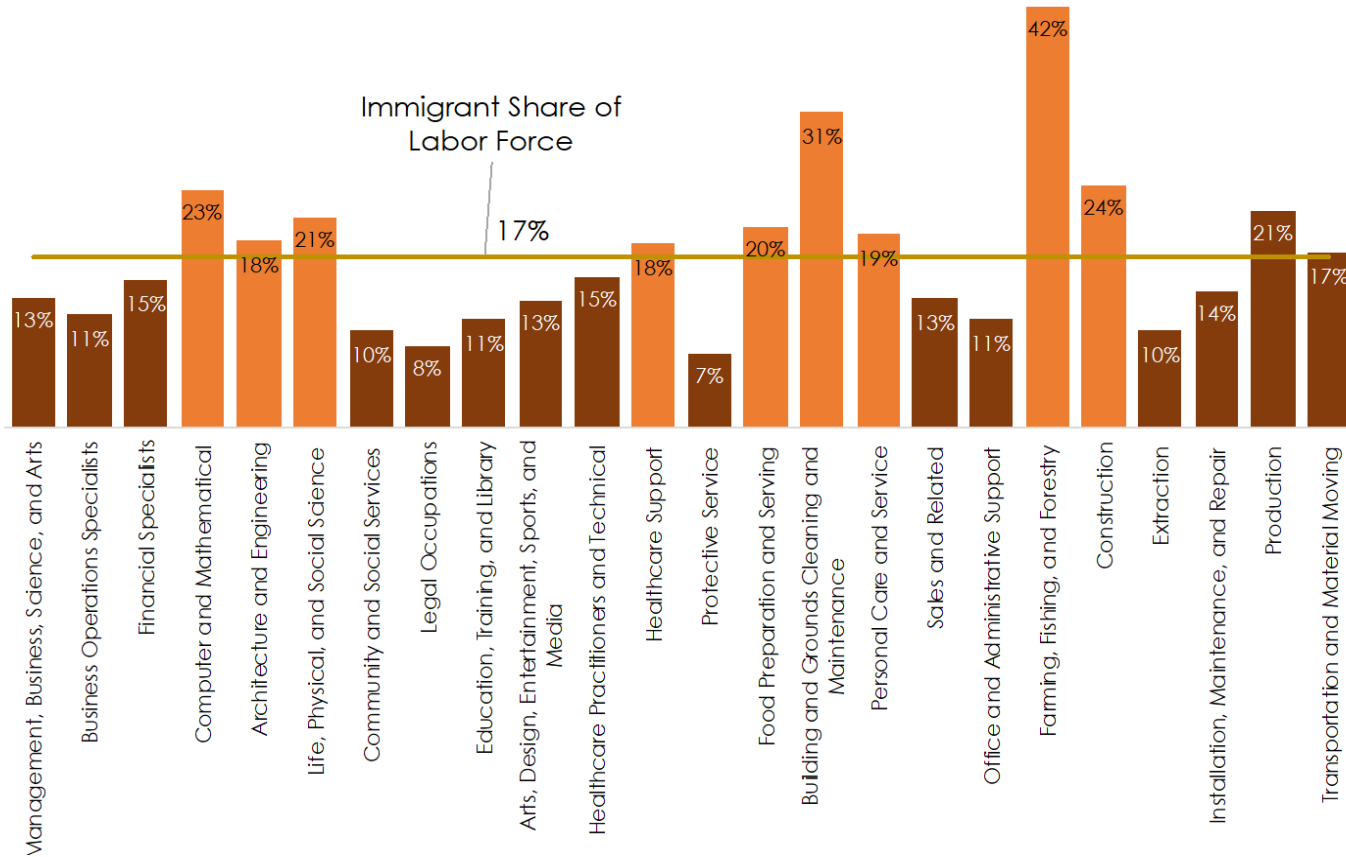
Figure 1: Immigrant Healthcare Workers in the Largest 15 Metropolitan Areas

Metropolitan Area	Number of Immigrant Healthcare Workers	Immigrant Share of All Healthcare Workers
Miami	163,433	51.0%
New York	480,742	41.8%
Los Angeles	233,270	40.1%
San Francisco	82,811	36.6%
Washington, DC	100,441	30.2%
Riverside-San Bernadino	47,363	26.4%
Houston	82,854	26.3%
Boston	101,723	23.4%
Seattle	42,615	22.3%
Chicago	105,552	21.0%
Dallas-Fort Worth	64,737	18.8%
Phoenix	32,362	15.0%
Philadelphia	55,128	14.4%
Atlanta	41,720	13.5%
Detroit	28,636	11.6%

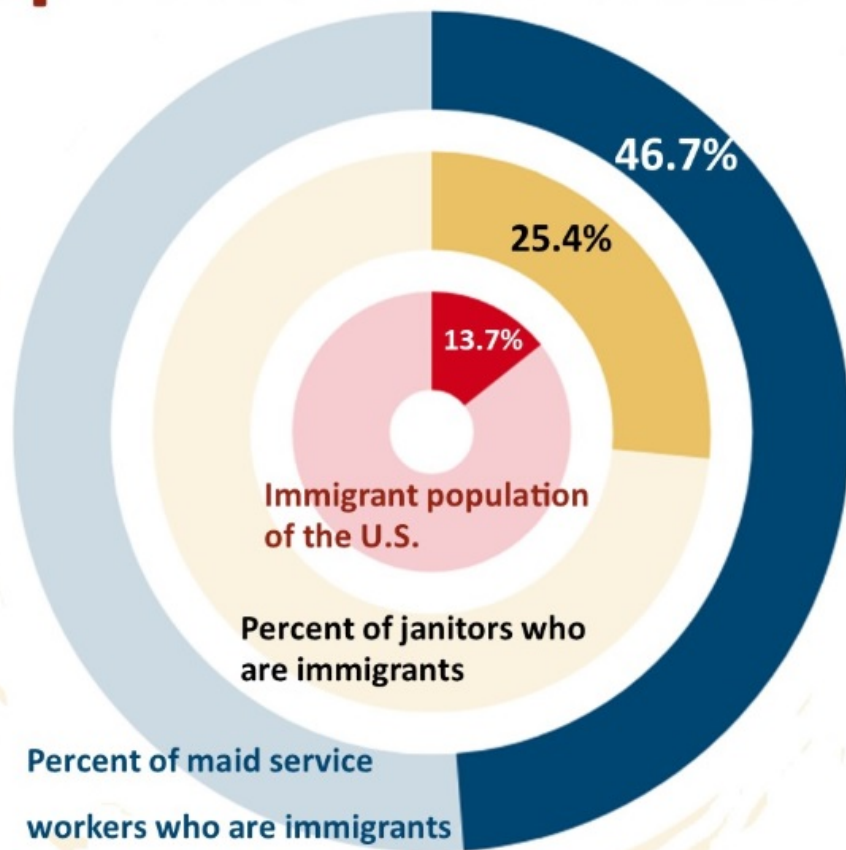
Source: New American Economy, "Immigrants on the Healthcare Frontlines: A Look at Local Data," 2020

# Immigrant Doctors Fight COVID-19





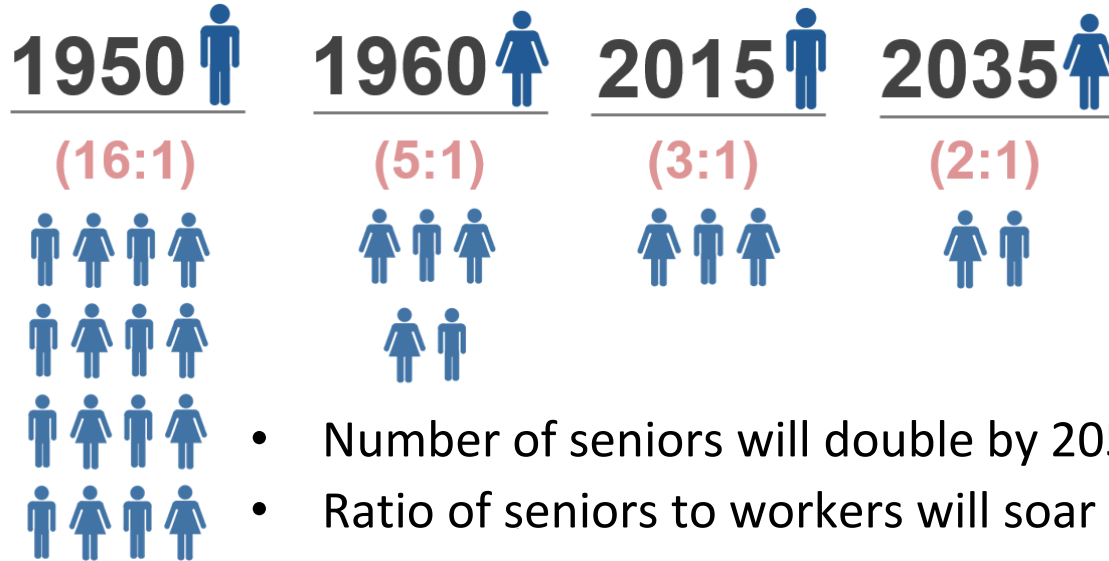
# Immigrants Keep American Clean



**The Immigrant  
Learning Center**

Source: David J. Bier, CATO Institute, "Immigrants Aid America During COVID-19 Crisis," March 23, 2020.

# Immigrants and Social Safety Systems

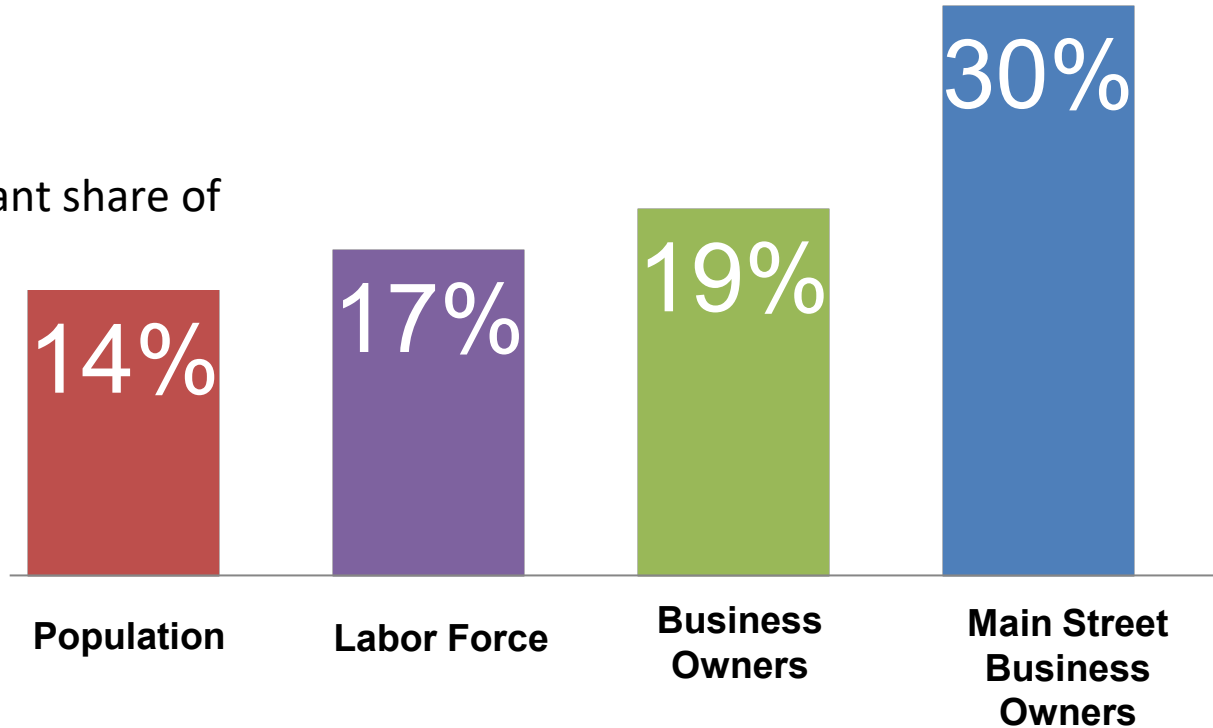


- Number of seniors will double by 2050
- Ratio of seniors to workers will soar by <70% by 2040
- Immigrants are subsidizing Medicare's core trust fund
- More workers needed, especially in healthcare



# Immigrants and Entrepreneurship

Immigrant share of







# Immigrants and job creation



# Immigration policy update

---

On April 22, President Trump signed a “Proclamation Suspending Entry of Immigrants Who Present Risk to the U.S. Labor Market During the Economic Recovery Following the COVID-19 Outbreak.”

- Suspension of visa issuances (exceptions: health care workers, investors, spouses or young children of citizens or LPRs)
- Order may be extended indefinitely (NYT)
- Expected announcement extending and/or broadening restrictions this week

# Who this affects

---

Suspends issuance of green cards to people currently outside the U.S., including:

- Employment-based green cards except for those entering as investors (EB-5)
- Green cards for spouses and children of green card holders
- Green cards for parents, siblings, and adult children of U.S. citizens
- Diversity program green cards ("visa lottery")

# Who this exempts

---

Exempts the following individuals, who can currently enter the U.S.:

- Current LPRs (green card holders)
- Individuals and their spouses/children entering on green cards as medical professionals to do essential work in the COVID-19 crisis
- Spouses and children under 21 of U.S. citizens
- Individuals with an investor visa (EB-5)
- Members of the U.S. Armed Forces and their spouses/children
- Individuals who are needed for a law enforcement objective or whose entry would be in the national interest

# Naturalization

---

- Early in pandemic, naturalization ceremonies suspended.
- Now, as with many court cases, drive-thru ceremonies are being hosted to clear backlog.
- However, USCIS in financial trouble as drop in applications (as a result of executive proclamation restrictions) means no fees, which account for 97% of expenditures (total \$4.8B budget)
- Nearly 3/4 USCIS workforce could be furloughed as a result, curtailing naturalizing new citizens and voters, especially consequential in states like Michigan and Florida.

# Naturalization

---

- “I wouldn’t be surprised if you have several hundred thousand people who are not in a position to vote in this election but would have been if business had been progressing normally at USCIS,” said Randy Capps of the Migration Policy Institute.
- Behind those waiting for the ceremony are some 700,000 people who have submitted applications for naturalization.
- Since the last year of the Obama administration, they now face an average processing time that has risen from six months to 10 months.



# DACA (Deferred Action for Childhood Arrivals)

---

- Supreme Court declared on June 18 that the Trump administration's 2017 attempt to terminate DACA was improper.
- Therefore, current DACA recipients are eligible to renew.
- Technically, USCIS should begin accepting first-time DACA applications as well as applications for advance parole as a result of this ruling. However, Trump administration may attempt to limit these options. Consult an attorney.
- Trump administration will file paperwork to do away with DACA this week.



# International students

---

- International students pursuing degrees will have to leave or be deported if their universities switch to online-only courses and they aren't able to transfer to another university.
- Affects thousands of foreign students who take classes, participate in training programs, or non-academic or vocational studies.
- Travel restrictions for U.S. passengers; countries' borders closed.
- 1.2m students at 8,700 schools (2018, Migration Policy Institute).
- Constitute 5.5% of U.S. higher education enrollment, contributed more than \$40 billion in 2019-2020 (*Washington Post*)

# Public charge and COVID-19 care

---

- USCIS will **not** consider testing, treatment or preventive care (including a vaccine if one becomes available) related to COVID-19 in deciding whether an applicant for a green card is likely to become a “public charge.”
- Unemployment benefits are earned and are **always** exempt from the public charge test.
- Benefits received by other family members, such as food stamps (SNAP) for U.S. citizen children, are **not** counted when determining if a green card applicant is likely to become a public charge.

# Unemployment benefits

---

- DACA recipients who live in California, Colorado, Illinois, Michigan, Texas and New York are eligible for state unemployment benefits.
- American citizens who are married to immigrants without Social Security numbers will not receive stimulus checks as part of the government's COVID-19 relief efforts.
  - BNI-partisan bills proposed to change this.
- About 1.2 million immigrants who lack legal status are married to a U.S. citizen. This effectively excludes legal immigrants who use an Individual Taxpayer Identification Number to file taxes.

## **Bridging Divides** in the Immigration Debate

---

- Anti-immigrant sentiment in the U.S. is more passionate than pro-immigrant sentiment
  - Of the Americans who consider immigration the most important voting issue, far more oppose immigration than support it.

## Bridging Divides in the Immigration Debate

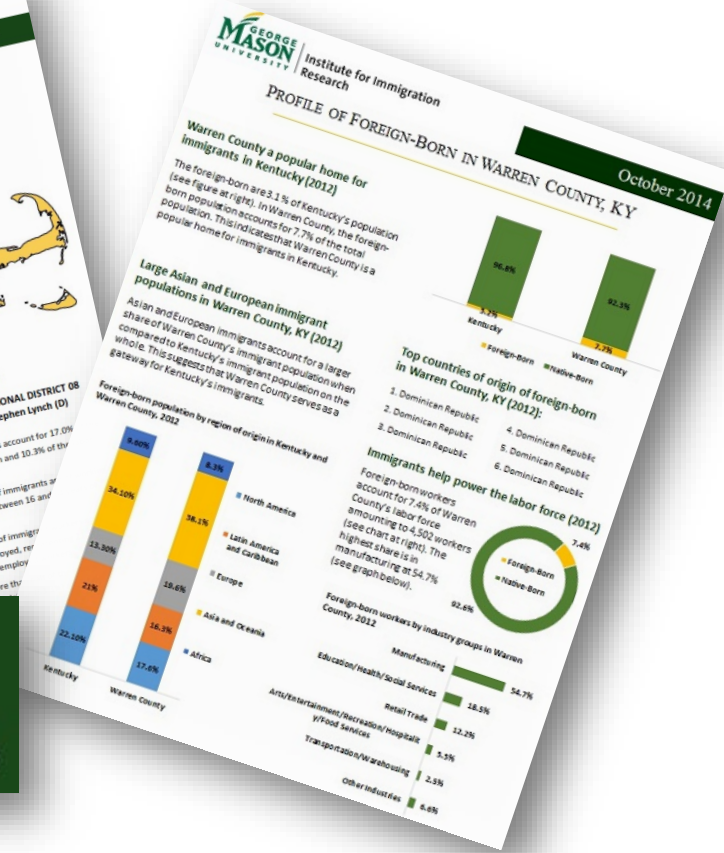
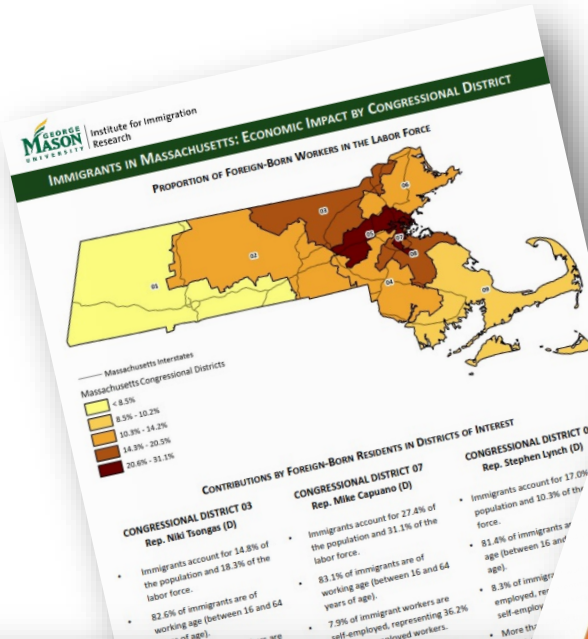
---

- The “Wings” are increasing in size, the “middle” is fast decreasing.
- The politically disengaged tend to veer right
- Both race *and* economics are driving Americans farther right

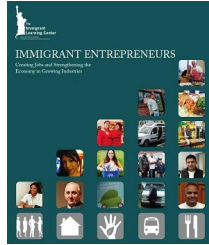
## **Bridging Divides** in the Immigration Debate

---

- For change to take place, we need to connect with working class Americans
- Find ways to build broad, local support bases
- Go back to the basics, and connect with values, issues and humanity



# Thank you



Learn how to change the immigration conversation at  
[www.ilctr.org/promoting-immigrants](http://www.ilctr.org/promoting-immigrants)



Immigration Research  
and Information

Online library of >1,000 immigration reports:  
[www.immigrationresearch.org](http://www.immigrationresearch.org)



Institute for  
Immigration Research

Request free, customizable fact sheets from  
<http://iir.gmu.edu/>

[dmohammed@ilctr.org](mailto:dmohammed@ilctr.org)